

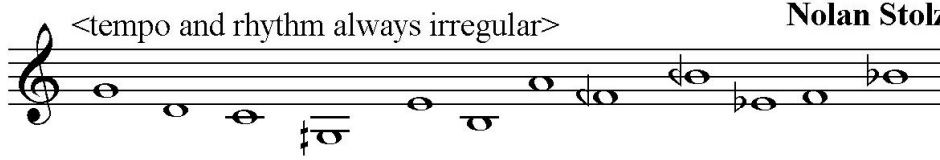
MADISON, WISCONSIN (postcard piece no. 6)

The Downtown Madison skyline as seen from the opposite shore of Lake Monona

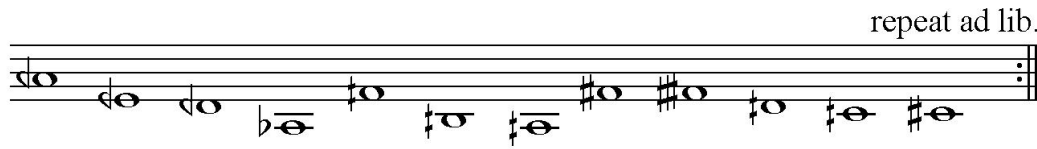
for 1-5 players never in sync, starting and ending at different times and places



Nolan Stolz



Begin Anywhere
End Anywhere



(c) 2010
Stolen Notes

Except for the beginning and the end of the piece, at least 3 notes (no more than 5) must be sounded at once. Adjust the tuning of these equal-tempered pitches to the following pure intervals when (or if) they occur:

for Cary Boyce and John Eaton

- M3 --> 5:4 P5 --> 3:2 m7 --> 7:4
- m3 --> 6:5 P4 --> 4:3